



## **Next Council Meeting**

Tuesday, October 14, 2025

Monday, November 3, 2025

### **Agendas close at noon**

If you would like to appear as a delegation, or have an item added to the agenda, please contact the Village office prior to noon on the following dates for the upcoming meetings:

Thursday, October 9, 2025

Thursday, October 30, 2025

### **Contact the Council**

Mayor McMynn:

[dmcmynn.midwaybc@shaw.ca](mailto:dmcmynn.midwaybc@shaw.ca)

### **ICBC & Motor Vehicles**

The Village of Midway Office offers all of your ICBC Autoplan and Drivers Services needs.

### **Tree Recycling Facility**

**Is open for the 2025 season.**

**Branches or bushes that have been pruned must have a diameter of 6" or less.**

**Midway Community Garden** - Another successful year is now almost behind us. Thanks to all the community members who continue to support our garden produce sales. Thanks also to all our dedicated and hard working volunteers who unselfishly donate their time and energy. We are already looking forward to next year and a bountiful harvest. Some changes for next year include a price increase in raised bed and garden plots from \$5 to \$10 effective immediately. Our maintenance costs for everything (raised bed repairs, watering equipment [hoses, taps], tool replacement) continue to increase and we are struggling to fund the required upgrades and improvements. The cost increase will help us maintain and improve an already wonderful addition to the Village of Midway. Thanks again for all your support. Raised bed and plot rentals can be made at the Village Office. Richard Dunsdon - Garden Manager.

**Midway Spray Park** - On Friday August 15 at 10am the Midway Spray Park was officially named and recognized in memory of long time public servant to the Village of Midway, Marguerite Rotvold. Marguerite began as a Councillor with the Village in 1985, served as Mayor from 2006-2008 and only missed one 3 yr term before retiring from public service in 2018.

Pictured: MLA Donegal Wilson, Jennifer Rotvold, Edward Rotvold, Peyton Rotvold, MP Helena Konanz, RDKB Regional Director Sharen Gibbs and Mayor Doug McMynn.





## Landfill Hours of Operation

- **Rock Creek** - Monday, Thursday, Saturday: 10am-3pm, Sunday: 10am-5pm
- **Greenwood** - Tuesday, Friday, Saturday: 9am-4pm

## Battery Recycling

Drop off your dead household batteries in the red box at the Village Office parking lot.

## New Midway Residents

**Welcome to Midway! New residents are asked to contact the Village Office to ensure we have your correct mailing address (Box #) on file. Please phone 250-449-2222.**

## Council Meeting Minutes

Are available on our website at: [www.midwaybc.ca/minutes-newsletters/](http://www.midwaybc.ca/minutes-newsletters/)

If you do not have access to the online version, please contact the Village Office for a hard copy.

## The Village of Midway

### ARENA CONCESSION BUSINESS OPPORTUNITY

Written proposals are now being accepted for individuals interested in leasing to operate the concession at the Boundary Expo Recreation Centre (Arena) in Midway, for the 2025/26 season. This lease will be on a seasonal basis, and the hours of operation will be based on the arena schedule, special event bookings, and hockey games. Evening and weekend work will be required.

A business licence, foodsafe and a minimum of Two Million (\$2,000,000.00) liability insurance is mandatory. Letters of intent must be submitted by 12pm, Friday, September 19, 2025 to the Village of Midway.

For more information please contact the Village Office at (250) 449-2222 or [midwayreception@shaw.ca](mailto:midwayreception@shaw.ca).

**FortisBC Open House** - FortisBC is hosting an open house event to talk about Public Safety Power Shutoffs (PSPS) - a last

resort safety measure during extreme weather conditions.

Location: Midway Social Centre,  
541 Seventh Ave\*  
Date & Time:  
Wednesday  
October 15,  
3-6pm

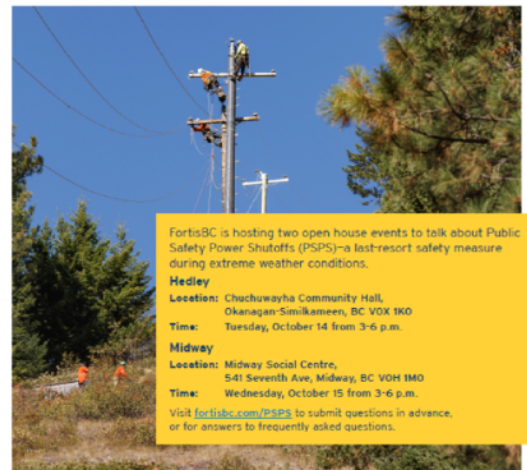
\*Location subject to change, we will provide any updates to our website and Facebook page.

Visit [fortisbc.com/PSPS](http://fortisbc.com/PSPS) to submit questions in advance, or for answers to frequently asked questions.

**Boundary Expo Recreation Centre** - Opening for the arena will be October 1, 2025. Stay tuned for a schedule!



**Want to learn how power shutoffs help protect our community from wildfires?**





The poster features a close-up, low-angle shot of a person's feet in black ice skates with white laces, gliding on a blue-tinted ice surface. Snowflakes are visible in the air. In the top left corner is the Royal Canadian Mounted Police (RCMP) crest. In the top right corner is the Midway Volunteer Fire Department logo, which is a red shield with a yellow border, containing the words 'MIDWAY', 'VOLUNTEER', and 'FIRE DEPT.' around a central emblem. The main title 'Boundary Skating Skills Camp' is written in a large, white, sans-serif font. Below it, 'Boundary Expo Recreation Centre' is written in a slightly smaller white font, followed by 'Oct 25<sup>th</sup> & 26<sup>th</sup>, 2025' in the same font. At the bottom, a line of smaller white text reads: 'The Boundary Skating Skills Camp is Proudly Sponsored & Organized by the 2025 Guns & Hoses Hockey Game group'.

Join us for this exciting skating development, skills and fun! Whether you're a seasoned skater or just starting out, this camp is designed to help kids of all skill levels.

**FREE registration** for all Boundary area kids (Beaverdell to Greenwood). The camp will be Sat, Oct 25th & Sun, Oct 26th, with skating times to be determined Sep/Oct (if not sooner). We are very excited to be bringing you an AMAZING Skating Skills Coach - Michele Pacholka! She has been teaching powerskating for over 40 years to skaters ranging in skill level from beginner to NHL. To register, please follow the Registration Link and complete 1 form per child:

<https://forms.gle/n2vQXrWuwLuBUPnb6> or visit our Facebook Event Page.

**QUESTIONS:** Please reach out to Michaela at mashbee@shaw.ca, who will be happy to answer any questions on behalf of the Guns & Hoses Hockey Game Fundraising group.

# Village of Midway Wildfire Risk Reduction Treatment

**The work that was scheduled to start this summer was delayed due to the high wildfire risk.**

**This is a reminder that the work will begin this fall.**

The project site, adjacent to Fritz Road (shown on the map), will be treated to lessen the impact of wildfires to the Village of Midway. Operational fuel treatment (management) is defined as the process of changing forest fuels to reduce aggressive fire behaviour. This may include treatments such as thinning, spacing and pruning trees, and removal of needles and woody debris from the forest floor. The intent is to reduce fuel load in the forest and reduce the potential for devastating wildfires that spread into communities. The treatment was identified in the 2022 Village of Midway Community Wildfire Protection Plan (CWPP).

The operational fuel treatment activities associated with removing the debris from the site that will be taking place can present certain risks to the public, but by taking note of the following information and adhering to the following recommendations you can have a safe and pleasant experience while recreating in the area.

## Observe and Respect Signage:

- Pay close attention to signs posted along the trails or adjacent to the project site as they provide crucial guidance for your safety. These signs may indicate areas temporarily closed due to forestry operations and highlight potential hazards such as falling trees or movement of heavy machinery. Respect these signs and avoid entering restricted areas for you own safety and to avoid disrupting forestry operations.
- Maintain Distance from Forestry Equipment:
  - o Forestry operations involve the use of heavy machinery, which can be hazardous if approached too closely. Keep a safe distance from any active forestry equipment, vehicles and machinery. As a general rule, maintain a minimum distance of 100 meters (300 feet), or about 3 tree lengths, from any working machinery or chainsaw activities to ensure your safety and to avoid interfering with the forestry operations.
- Stay Alert and Communicate:
  - o Maintain awareness of your surroundings and always be vigilant. Stay focused, especially near areas with active forestry operations.
  - o Avoid wearing headphones or engaging in activities that may distract you from potential hazards. If you notice any immediate safety concerns or witness an accident, promptly report it to the forestry contractor or implementer.

By following these guidelines, you can continue to safely enjoy these recreational trails and land while forestry operations are occurring on the adjacent project area(s). Remember to stay informed, respect signage, maintain a safe distance from forestry equipment and stay alert and communicate. Your safety is the utmost priority, so we encourage you to adhere to these guidelines and help us maintain a safe environment for all. Stay safe and enjoy your time in the area. Below is an interesting information video to "Manage Forest Fire Better Together": [https://www.youtube.com/watch?v=\\_ghW2jnpzA&t=7s](https://www.youtube.com/watch?v=_ghW2jnpzA&t=7s)

