

## Next Council Meeting

Monday, June 9, 2025

Monday, July 21, 2025

### Agendas close at noon

If you would like to appear as a delegation, or have an item added to the agenda, please contact the Village office prior to noon on the following dates for the upcoming meetings:

Thursday, June 5, 2025

Thursday, July 17, 2025

### Contact the Council

Mayor McMynn:

[dmcmynn.midwaybc@shaw.ca](mailto:dmcmynn.midwaybc@shaw.ca)

### ICBC & Motor Vehicles

The Village of Midway Office offers all of your ICBC Autoplan and Drivers Services needs.

### Tree Recycling Facility

**Is open for the 2025 season.**

**Branches or bushes that have been pruned must have a diameter of 6" or less.**

**2025 Summer Student Position** - The Village of Midway is looking to hire a summer student from June 24 – August 29, 2025. This is 35 hours a week position, and the wage is \$18.50 per hour. The summer student will be asked to complete a wide range of tasks, including maintenance of parks, roads, garbage collection, irrigation system, inspection of municipal facilities and other maintenance work. Training will be provided. The summer student will take direction from the Public Works Foreman or Designate. Class 5 or 7 Drivers' Licence preferred. Steel Toed Boots are required.

Please submit your resume via email to [midwaybc@shaw.ca](mailto:midwaybc@shaw.ca) attention: Lisa Teggarty, CAO by 4:00 p.m., June 10, 2025

We thank all applicants for their submission and advise that only those selected for an interview will be contacted.

### **Midway Community Centre Renovations Update**

- The Midway Community Centre project has experienced some delays due to structural items relating to the age of the building. These items needed to be addressed to ensure that the renovation adheres to new building code. Expected completion of the project has been rescheduled to the end of December 2025.

We appreciate our residents and Midway Community Association members patience during construction!

If you have any queries regarding the project please contact Lisa Teggarty, CAO, Tel: 250-449-2222 email: [midwaybc@shaw.ca](mailto:midwaybc@shaw.ca)



## Landfill Hours of Operation

- **Rock Creek** - Monday, Thursday, Saturday: 10am-3pm, Sunday: 10am-5pm
- **Greenwood** - Tuesday, Friday, Saturday: 9am-4pm

## Battery Recycling

Drop off your dead household batteries in the red box at the Village Office parking lot.

## New Midway Residents

**Welcome to Midway! New residents are asked to contact the Village Office to ensure we have your correct mailing address (Box #) on file. Please phone 250-449-2222.**

## Council Meeting Minutes

Are available on our website at: [www.midwaybc.ca/minutes-newsletters/](http://www.midwaybc.ca/minutes-newsletters/)

If you do not have access to the online version, please contact the Village Office for a hard copy.

**2025 Tax Rate** - The Village of Midway Council approved a 10% increase in municipal taxes to all assessment classes at the May 14<sup>th</sup>, 2025 Special Council meeting, due to a significant decrease in Class 4 Major Industry tax assessment in 2025 and the ongoing challenge of inflationary costs.

The decision to implement a 10% tax increase was made after careful deliberation. The Council recognized the need to balance fiscal responsibility with the well-being of its citizens. Key considerations included:

- **Maintaining Essential Services:** The funds raised through the tax increase will help sustain critical services such as road maintenance, sanitation, public safety, and local infrastructure projects.
- **Addressing Revenue Shortfalls:** By compensating for the revenue lost due to decreased Class 4 Major Industry assessments, the Council aims to prevent disruptions caused by budgetary constraints.
- **Adapting to Rising Costs:** The additional revenue is necessary to offset the impact of inflation on the municipality's operational expenses.

Tax notices are being mailed out this week and will include a breakdown of the average increase per assessed value. The Village is also required to collect property taxes on behalf of other taxing jurisdictions. Other tax collection includes Regional District of Kootenay Boundary Taxes, West Kootenay-Boundary Regional Hospital District Taxes, School Taxes, Police Taxes, BC Assessment Authority and Municipal Finance Authority taxes.

**Kettle River Museum** - The Museum is opening on Wednesday May 21, 2025

- May 21 – June 29: Open 5 days a week – Wednesday to Sunday – 10:00 am to 4:00 pm
- June 30 – Sept 6: Open 7 days a week 9:30 am to 4:00 pm
- Sept 7 to Sept 30: To be announced at a later date.

**Kettle Spray Park** - Public works has turned the water on to the spray park for the season. Hopefully the warm weather is just around the corner.

# Village of Midway Wildfire Risk Reduction Treatment

Starting this summer, the site adjacent to Fritz Road (shown on the attached map) will be treated to lessen the impact of wildfires to the Village of Midway. Operational fuel treatment (management) is defined as the process of changing forest fuels to reduce aggressive fire behaviour. This may include treatments such as thinning, spacing and pruning trees, and removal of needles and woody debris from the forest floor. The intent is to reduce fuel load in the forest and reduce the potential for devastating wildfires that spread into communities. The treatment was identified in the 2022 Village of Midway Community Wildfire Protection Plan (CWPP).

The operational fuel treatment activities associated with removing the debris from the site can present certain risks to the public, but by taking note of the following information and adhering to the following recommendations you can have a safe and pleasant experience while recreating in the area.

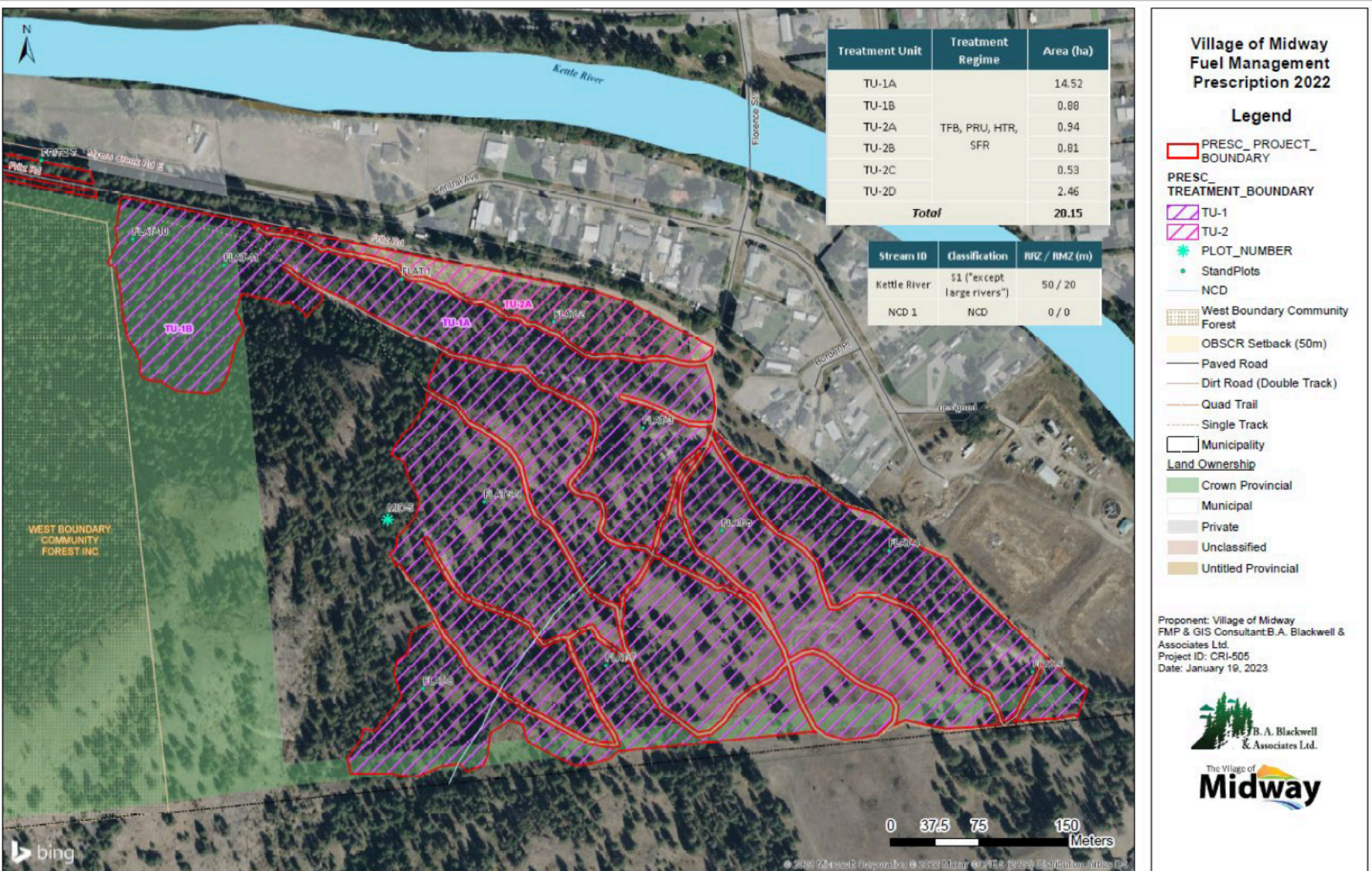
## Observe and Respect Signage:

- Pay close attention to signs posted along the trails or adjacent to the project site as they provide crucial guidance for your safety. These signs may indicate areas temporarily closed due to forestry operations and highlight potential hazards such as falling trees or movement of heavy machinery. Respect these signs and avoid entering restricted areas for your own safety and to avoid disrupting forestry operations.
- Maintain Distance from Forestry Equipment:
  - Forestry operations involve the use of heavy machinery, which can be hazardous if approached too closely. Keep a safe distance from any active forestry equipment, vehicles and machinery. As a general rule, maintain a minimum distance of 100 meters (300 feet), or about 3 tree lengths, from any working machinery or chainsaw activities to ensure your safety and to avoid interfering with the forestry operations.
- Stay Alert and Communicate:
  - Maintain awareness of your surroundings and always be vigilant. Stay focused, especially near areas with active forestry operations.
  - Avoid wearing headphones or engaging in activities that may distract you from potential hazards. If you notice any immediate safety concerns or witness an accident, promptly report it to the forestry contractor or implementer.

By following these guidelines, you can continue to safely enjoy recreational trails and land while forestry operations are occurring on the adjacent project area(s). Remember to stay informed, respect signage, maintain a safe distance from forestry equipment and stay alert and communicate. Your safety is the utmost priority, so we encourage you to adhere to these guidelines and help us maintain a safe environment for all. Stay safe and enjoy your time in the area. Below is an interesting information video to “Manage Forest Fire Better Together”:

[https://www.youtube.com/watch?v=\\_ghW2jnmpzA&t=7s](https://www.youtube.com/watch?v=_ghW2jnmpzA&t=7s)







# MIDWAY COMMUNITY CLUB

## *Annual* **GENERAL** *Meeting*

**SUNDAY, MAY 25TH**

**MIDWAY SOCIAL CENTRE ---- 2 PM**

**OUR AIM IS TO DEVELOP COMMUNITY !**

**\* NEW MEMBERS ALWAYS WELCOME\***



# Midway Public Library BOOKS & BOTTLES FUNDRAISER

**Saturday May 24, 2025**

**10am – 2pm**

**Midway Library Parking Lot**

Come join us for our annual Spring book sale – by donation. Lots of books available, for all ages. Have empty cans/bottles laying around? Bring them down and help support our small library.

250-449-2620

[midwaypubliclibrary@gmail.com](mailto:midwaypubliclibrary@gmail.com)