

Project Name Midway Community Centre
Cover Project # 21163
Client Project # N/A
Date August 22, 2023



ADDENDUM NO.7

From:

Architectural Cover Anne-Frederique Paradis annef@coverac.ca 250-551-7364

Recipient:

Owner The Village of Midway Wendy Higashi whigashioffice@gmail.com 250-443-1750

This Addendum shall form part of the Contract Documents and is to be read, interpreted and coordinated with all other parts. The following revisions supersede the information contained in the original specifications and drawings issued for the above-named project.

This Addendum forms part of the Bid Documents and modifies as stated herein:

0.0 General:

Question: Regarding the door schedule – can this be completed, are all doors & frames new? Existing? To be reused? Metal or Wood?

Answer: All doors and frames shown in the door schedule are to be new. See attached

Additional mechanical information in attached M02. Addition to acceptable manufacturer.

1.0 Specifications:

» Not Used

2.0 Drawings:

» Sheet A005 updated. See attached
» Addendum M02

Issued by the Consultant

Anne-Frederique Paradis

2023-08-22

Name

Signature

Date

DOOR SCHEDULE - COMMON									
Mark	Type Mark	Height	Width	Door Material	Frame Material	Door Hardware	Fire Rating	Finish	Comments
D002-1	G	2134	864	WD	IWD	PRIVACY LOCK	-	PT	
D004-1	F	2134	915	HM	HM	PRIVACY LOCK, SELF CLOSING DEVICE	20 MIN	PT	
D004-2	H	1524	915	HM	HM	SELF CLOSING DEVICE	20 MIN	PT	
D005-1	G	2134	864	WD	WD	SELF CLOSING DEVICE	-	PT	
D006-1	A	2134	1830	HM	HM	SELF CLOSING DEVICE	-	PT	
D007-1	G	2134	864	WD	WD	PRIVACY LOCK	-	PT	
D008-1	C	2032	1525	WD	WD	PRIVACY LOCK	-	PT	
D011	G	2134	864	WD	WD	PRIVACY LOCK	-	PT	
D012-1	G	2134	864	WD	WD	SELF CLOSING DEVICE	-	PT	
D013-1	A	2134	1830	WD	WD	PRIVACY LOCK	-	PT	
D013-2	F	1372	2134	AL	AL	PRIVACY LOCK	-	PT	
D101-1	B	2134	1830	HM	IHM	PANIC BAR, DEAD BOLT, SELF CLOSING DEVICE	-	PT	
D102-1	E	2032	1219	SCW	WD	-	-	PT	
D103-1	D	2134	914	WD	WD	PRIVACY LOCK	-	PT	
D104-1	D	2134	914	WD	WD	PRIVACY LOCK	-	PT	
D105-1	D	2134	914	WD	WD	PRIVACY LOCK	-	PT	
D106-1	A	2134	1830	HM	HM	PANIC BAR, SELF CLOSING DEVICE	-	PT	
D106-2	A	2134	1830	HM	IHM	PANIC BAR, DEAD BOLT, SELF CLOSING DEVICE	-	PT	

SHEET NOTES - DOORS

A. DOORS AND FRAMES TO EXIT STAIRS AND SERVICE ROOMS AND SUITE ENTRANCE FRAMES FROM PUBLIC CORRIDORS MUST CONFORM TO CANADIAN STEEL DOOR AND FRAME MANUFACTURER'S ASSOCIATION (CSDFMA), MANUFACTURING SPECIFICATIONS FOR STEEL DOORS AND FRAMES.

B. FIRE-RATED DOOR ASSEMBLIES COMPLYING WITH NFPA 80 ARE LISTED/LABELLED BY ULC/WH (WARNOK HERSEY) ACCEPTABLE TO AUTHORITIES HAVING JURISDICTION FOR FIRE PROTECTION RATINGS INDICATED. MATERIALS NOT LESS THAN THE THICKNESS SPECIFIED.

C. SUBMITTALS: CLEARLY INDICATE MANUFACTURER, DOOR FRAME, ELEVATIONS, DIMENSIONS, FASTENING, REINFORCING, THICKNESS, HARDWARE, REINFORCEMENT DETAILS, OPENING REQUIREMENTS FOR GLAZING, QUALITY OF MATERIALS, SHOP FINISHES, FABRICATION DETAILS, INSTALLATION REQUIREMENTS AND WALL CONDITION/ ANCHORAGE DETAILS PRIOR TO FABRICATION.

INCLUDE SCHEDULE IDENTIFYING EACH UNIT, WITH DOOR MARKS AND NUMERS RELATING TO NUMBERING ON DRAWINGS AND DOOR SCHEDULE OF THE ARCHITECT.

D. MAXIMUM GLAZING, AREA OF FIRE RATED GLASS, FIRE RATING, REQUIREMENTS OF THE HOLD OPEN DEVICE ACTIVATED BY THE FIRE ALARM AND TEMPERATURE RISE RATING AS GOVERNED BY BC BUILDING CODE AND NFPA 80.

E. EXTERIOR DOORS MUST MEET THE REQUIREMENTS OF AAMA/WDMA/CSA 101/IS2/ A440-NAFS AND CAN/CSA A440S1-CANADIAN SUPPLEMENT. PROVIDE MINIMUM RATINGS AS PECIFIED BY THE BUILDING ENVELOP CONSULTANT.

F. CONSIDER USING MATERIALS THAT ARE SOURCED LOCALLY AND HAVE HIGH RECYCLED CONTENT.

G. DOOR AND FRAME PRODUCT SHALL BE MANUFACTURED FROM COMMERCIAL STEEL (CS) DRY PASSIVATED, TYPE B TO ASTM A924, GALVANIZED TO ASTM A653, COATING DESIGNATION Z275 FOR EXTERIOR AND ZF075 FOR INTERIOR DOORS, ZINC COATING PRIOR TO FABRICATION.

H. ATTACH FIRE RATED LABEL TO HINGE SIDE OF DOOR.

I. REFER TO SECTION 08 99 99 FOR DOOR HARDWARE SCHEDULE.

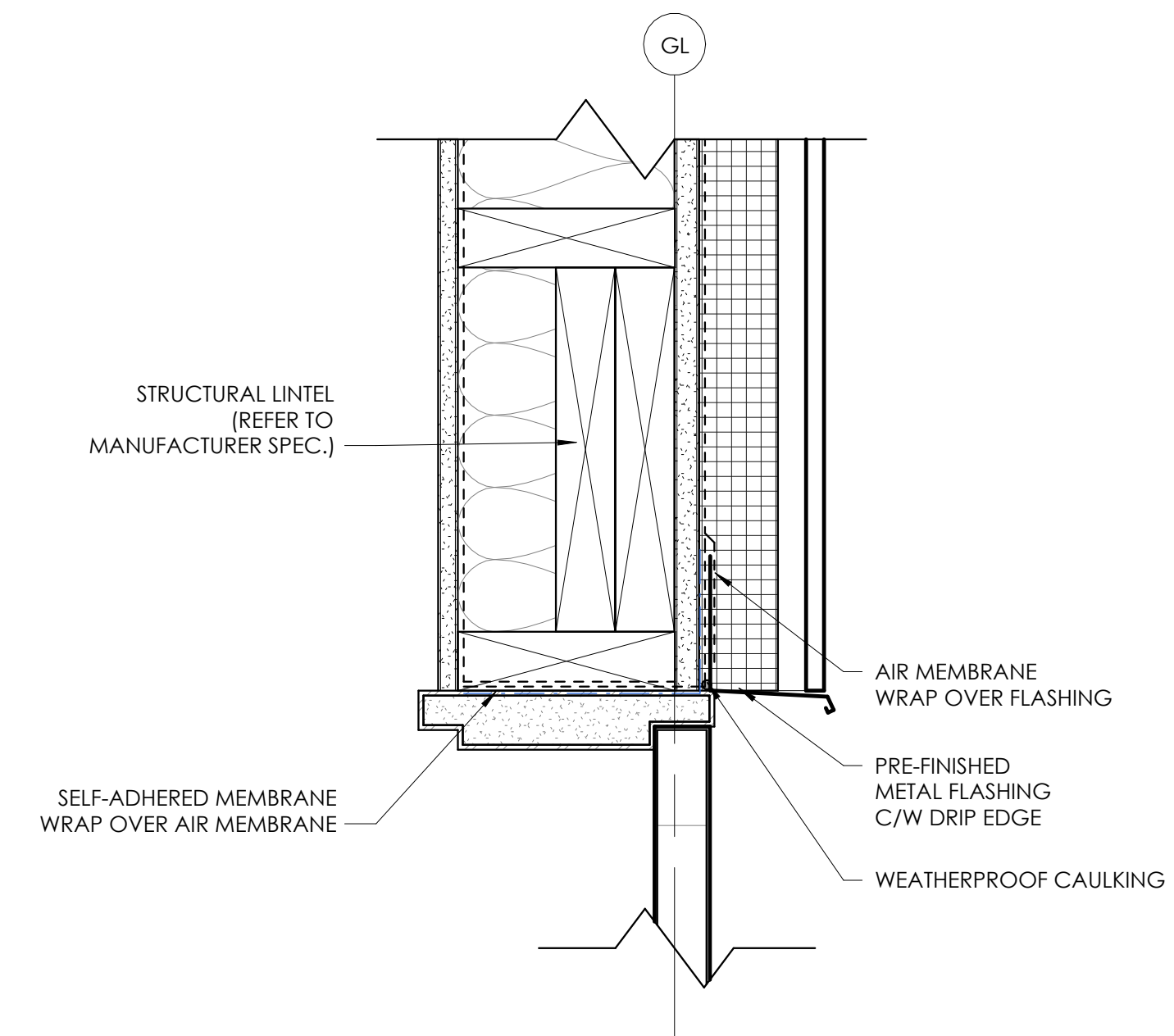
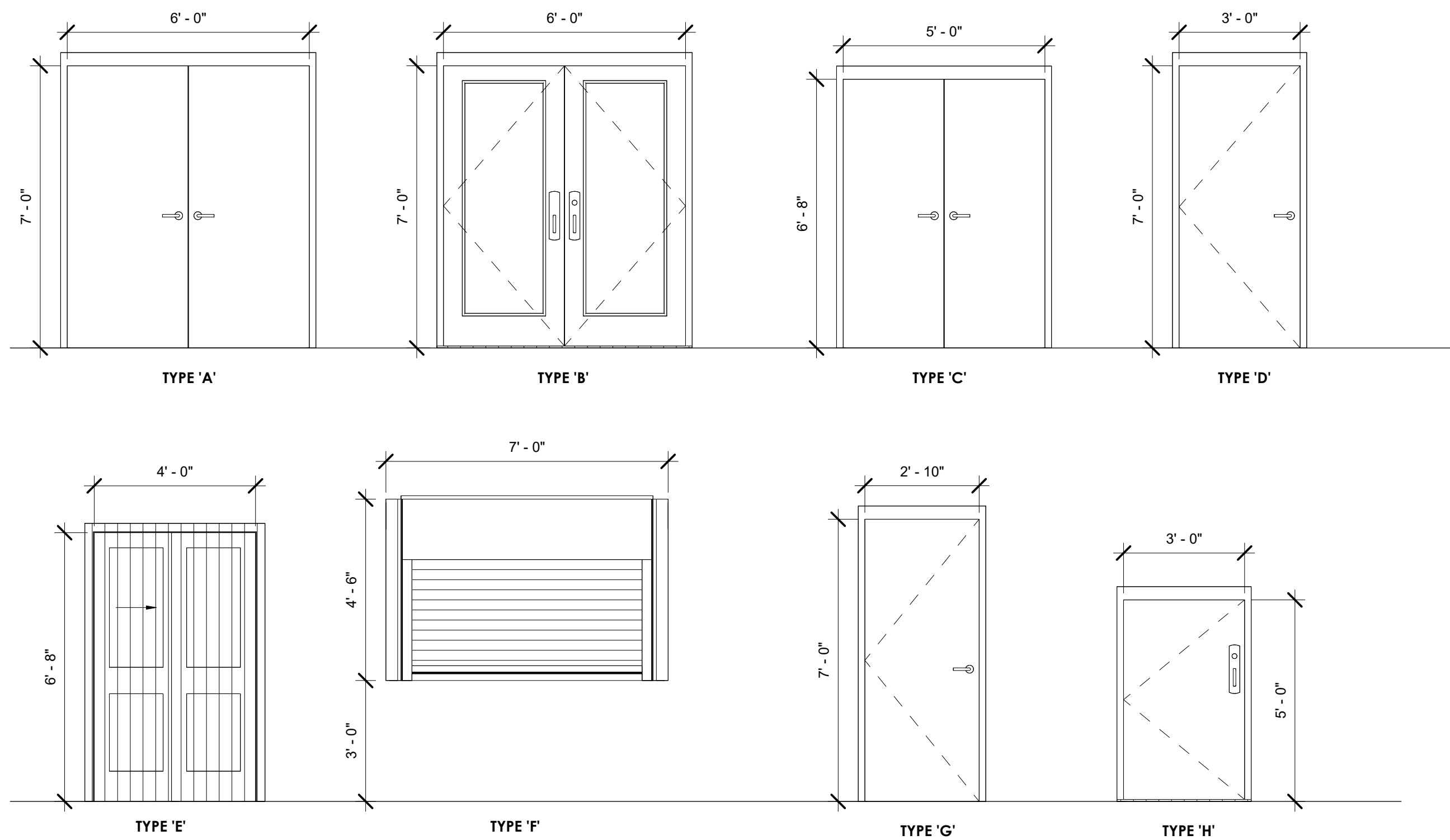
ABBREVIATION LEGEND

AL	ALUMINUM
CA	CLEAR ANODIZED
CGW	FIBREGLASS CLAD WOOD
GL	GLAZING
HCW	HOLLOW CORE WOOD
HM	HOLLOW METAL
IHM	INSULATED HOLLOW METAL
NRP	NON REMOVABLE PIN
PF	PRE-FINISHED
PCW	PAINT GRADE WOOD
PM	PRE-MANUFACTURED
PM M	PRE-MANUFACTURED METAL
PM R	PRE-MANUFACTURED RUBBER
PSF	PRESSED STEEL FRAME
PT	PAINT FINISH
SCW	SOLID CORE WOOD
S.I.D.	SEE INTERIOR DESIGN DRAWINGS
ST	STEEL
SW	SOLID WOOD
TG	TEMPERED GLASS
TSG	TEMPERED SAFETY GLASS
WG	WIRED GLASS
VYL	VINYL
TBM	THERMALLY BROKEN METAL

GENERAL DOOR NOTES

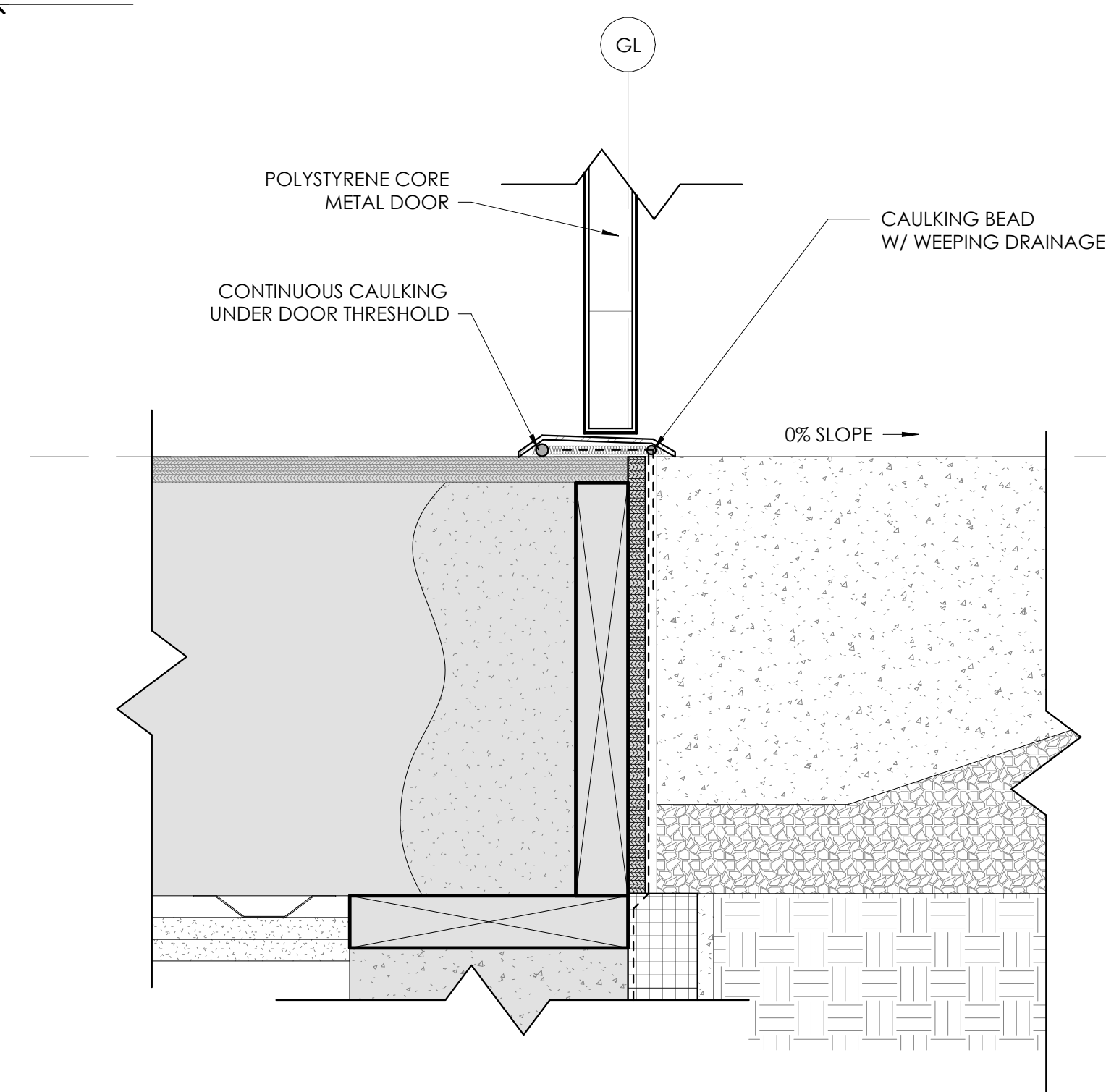
- ALL DOOR HARDWARE TO BE MOUNTED AT 1040mm A.F.F ON CENTRE UNLESS NOTED OTHERWISE
- VERIFY FRAME OPENING WITH MANUFACTURER AND FIELD VERIFY ALL ROUGH OPENINGS
- GLAZING SHALL MEET STANDARDS AS SET FORTH IN 3.3.1.19 2018 BCBC.
- ALL EXTERIOR ALUMINUM DOORS AND FRAMES SHALL BE INSULATED. VERIFY ALL DOOR HARDWARE AND DOOR HANDLINGS PRIOR TO ORDERING ALL DOOR HARDWARE. DOOR HARDWARE TO COMPLY WITH 3.1.13, 3.1.8.12., 3.1.8.13, 3.1.8.14, 3.1.8.15. DOOR HARDWARE TO BE APPROVED BY CLIENT.
- MAXIMUM AREA OF WIRE GLASS IN DOOR SHOULD COMPLY WITH 3.1.8.18. AND TABLE 3.1.8.17.
- ALL EXTERIOR FRAME AND DOOR COLOURS TO BE CONFIRMED WITH THE ARCHITECT.
- ALL INTERIOR FRAME AND DOOR COLOURS TO BE CONFIRMED WITH THE ARCHITECT.
- SEE HARDWARE SCHEDULE & REQUIREMENTS. REFER TO SPECIFICATIONS.
- ALL DOOR GLAZING IN FRR DOORS TO BE GOERGIAN WIRED GLASS.
- ALL DOOR GLAZING IN EXTERIOR DOORS TO BE DOUBLE GLAZED TEMPERED GLASS.
- INSTALL OVERHEAD DOOR AS PER MANUFACTURER REQUIREMENTS. CONTRACTOR SHALL VERIFY THE NUMBER OF REQUIRED DOORS PRIOR TO ORDERING.
- ALL DWELLING UNIT ENTRY DOORS MUST HAVE DOOR VIEWERS WITH A "180 DEGREE" VIEWING AREA. INSTALL AT 1625 MM FROM FINISHED FLOOR. ACCESSIBLE UNIT NEEDS ADDITIONAL VIEWER BETWEEN 1000 mm TO 1200 mm.

DOOR ELEVATIONS



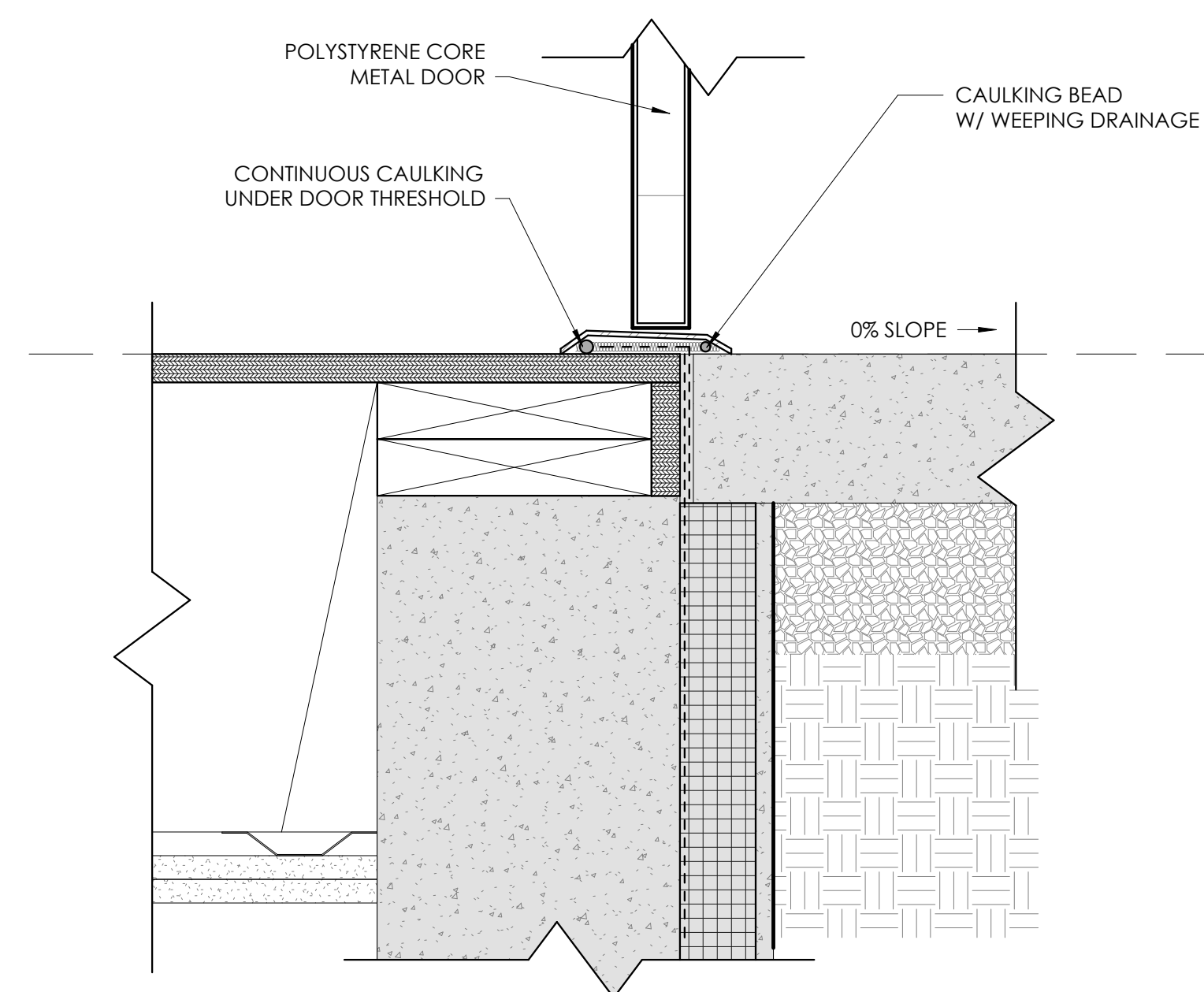
SECTION DETAIL - DOOR HEAD

2 3" = 1'-0"



SECTION DETAIL - DOOR THRESHOLD @ RAMP

3 3" = 1'-0"



SECTION DETAIL - DOOR THRESHOLD @ MAIN ENTRANCE

1 3" = 1'-0"

NOT FOR CONSTRUCTION



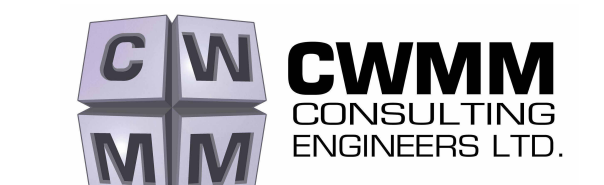
ARCHITECTURE

#1 94 Baker Street
Nelson BC
V1L 4G7

250.354.4445
coverco.ca

Copyright reserved. This design and drawing is the exclusive property of COVER Architectural Collaborative Inc. and cannot be used for any purpose without the written consent of the Architect. This drawing is not to be used for construction until issued for that purpose by the Architect. Prior to commencement of the work the Contractor shall verify all dimensions, details and levels to identify any errors and coordinate any discrepancies between the drawing and the full Contract Documents and bring these items to the attention of the Architect for clarification. These drawings must not be scaled. These drawings supersede previous issues.

CONSULTANTS



REVISIONS

Revision Schedule		
Number	Date [yy/mm/dd]	Description
1	2022 01 31	Issued for Coordination
2	2022 04 11	50% DD
3	2022 05 04	100% DD
4	2022 07 07	50% IFC/ IFT
5	2022 10 11	TENDER
6	2023 06 15	RE-DESIGN COORDINATION
7	2023 08 03	IFT
10	2023 08 17	Addendum #7

MIDWAY COMMUNITY CENTRE

ADDRESS
692 SEVENTH AVENUE, MIDWAY BC

PROJECT #
21163

DATE
2023-08-03

DESIGNED BY AF

CHECKED BY AF/TB

DRAWN BY OS/RY/SH

SHEET
DOOR SCHEDULE

A005

ADDENDUM



PROJECT NAME: MIDWAY COMMUNITY CENTER

TO: COVER ARCHITECTURAL COLLABORATIVE INC. **ATTENTION:** ANNE-FREDERIQUE PARADIS

PROJECT NO.: 16659.002

DATE: AUGUST 22, 2023

ADDENDUM NO.: M-02

ISSUED BY: MARIAH HOLMES

ADDEND SPECIFICATION SECTION 20 70 63 – AIR HANDLING UNIT (KITCHEN MAKEUP AIR), AS FOLLOWS:

1. Replace paragraph 1.3 Acceptable Manufacturers, as follows:
 - .1 Manufacturers of air handling units whose products are approved in principle, but subject to requirements of drawings and specifications are:
 - .1 CaptiveAire, Engineered Air.

ADDEND SPECIFICATION SECTION 20 90 00 – CONTROLS, AS FOLLOWS:

1. Add Honeywell – Genesis to the Acceptable Manufacturers and Controls Agency, as follows:

	System	Acceptable Manufacturers or Agencies (note 2)	Shop Drawings & Installation Manuals	Other Submittals	Relevant Codes & Standards
1.	Acceptable Manufacturer and Controls Agency	Delta-Kimco	Required		
		Reliable-Houle			
		Honeywell-Genesis			

END OF ADDENDUM NO. M-02

The above amendments are hereby made as part of the Contract Documents.

The above revisions and/or additions shall be made to contract documents and the cost shall be included in the Tender Price.